



GMT MONTHLY MEMBERSHIP PROGRESS REPORT

Results as of: 4/30/2018

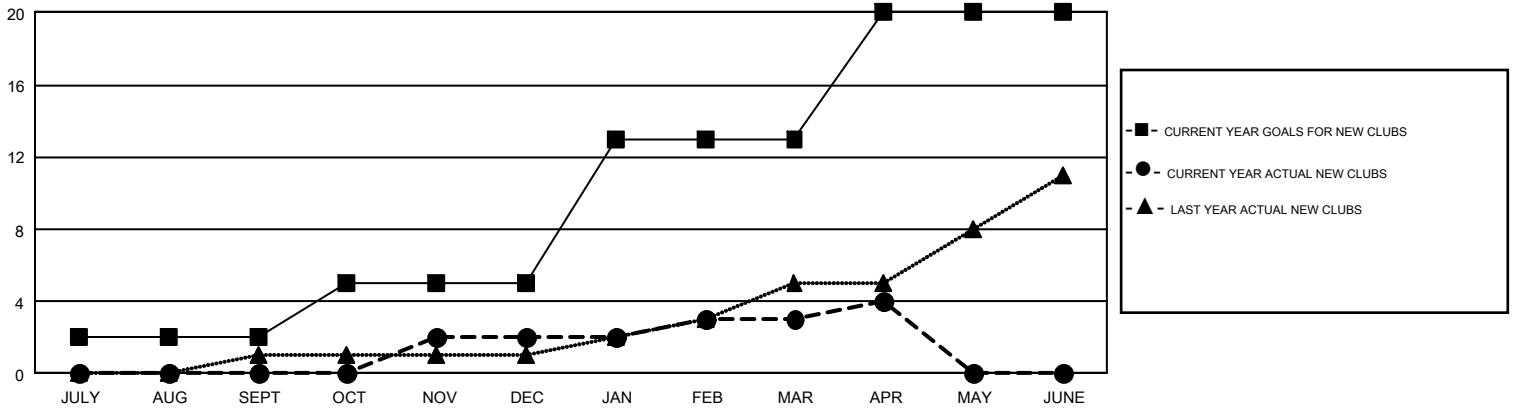
GMT Constitutional Area 2, Group B

GMT: CHRIS LEWIS

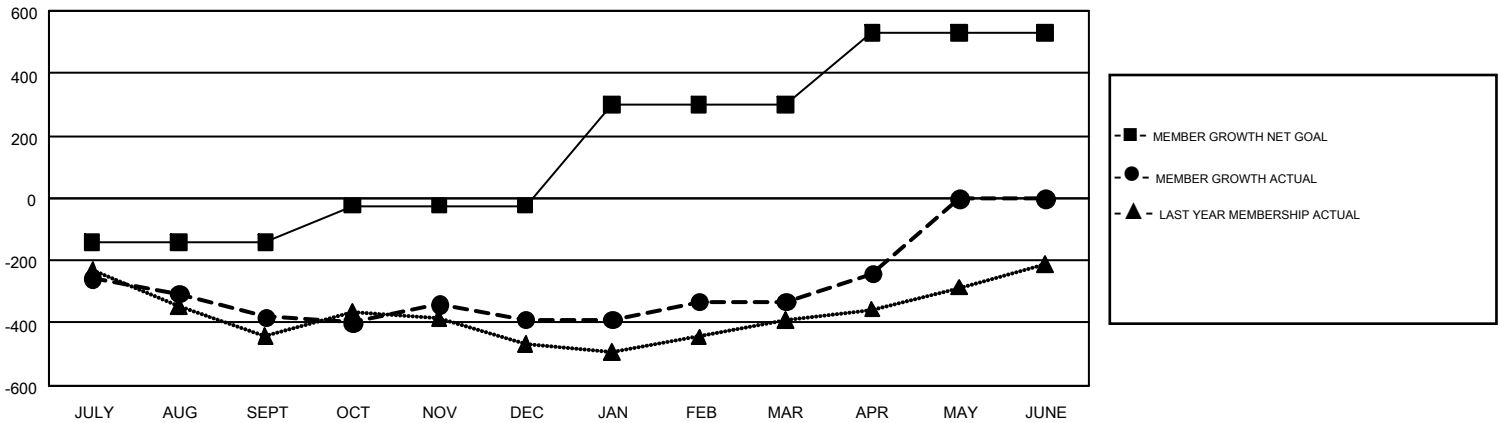
REPORT DOES NOT INCLUDE CLUBS IN UNDISTRICTED AREAS.

Clubs				Members			
RESULTS FOR 2017-2018				RESULTS FOR 2017-2018			
QUARTER	NEW CLUB GOAL	NEW CLUBS	DROPPED CLUBS	QUARTER	MEMBER GROWTH NET GOAL	MEMBER GROWTH ACTUAL	DROPPED MEMBERS ACTUAL (including transfers)
JULY/AUG/SEPT	2	0	1	JULY/AUG/SEPT	-140	275	586
OCT/NOV/DEC	3	2	5	OCT/NOV/DEC	116	644	596
JAN/FEB/MAR	8	1	1	JAN/FEB/MAR	323	551	433
APR/MAY/JUNE	7	1	0	APR/MAY/JUNE	231	229	125

GOALS AND ACTUAL NEW CLUBS CUMULATIVE



GOALS AND ACTUAL MEMBERS CUMULATIVE



DROPPED CLUBS: 7	467 CLUBS OF 772 ADDED 1 OR MORE NEW MEMBERS	GENDER DISTRIBUTION MALE 13,166 (69.99%) FEMALE 5,645 (30.01%)
DROPPED MEMBERS DECEASED 238 CLUB CANCELLED 76 OTHER 1,425 <hr/> TOTAL 1,739	CLICK HERE FOR CUMULATIVE MEMBERSHIP DATA	TOTAL FAMILY UNIT MEMBERS 3,469 FAMILY MEMBERS PAYING HALF DUES 1,776